

# APEXX 8R

The BOXX APEXX 8R Rackmount supports up to eight dual slot NVIDIA GPU cards and provides room for additional NVIDIA® Sync II cards, networking, storage adapters or NVMe storage devices while enabling increased bandwidth and lower latencies between PCIe Gen3 devices. APEXX 8R can drastically accelerate GPU rendering and look development enabling more refined visuals in less time.

## RECOMMENDED FOR APPLICATIONS LIKE



## KEY FEATURES

- Features dual Intel® Xeon® processors with up to 22 cores each (44 total) for professional rendering & simulation in applications like Autodesk® Revit and 3ds Max, or professional on-air graphics with VizRT.
- Up to 8 full-size professional grade NVIDIA® Quadro™, NVIDIA® Tesla™ or AMD® Radeon Pro™ graphics cards
- Up to 1TB of Memory
- Up to 10 removable SSD/SATA drives and up to 4 internal 2.5" or 2 internal 3.5" SSD/SATA drives

## DIMENSIONS

4U Rackmount  
19" W, 6.97" H, 30.18" D

**BOXX**  
www.boxx.com

## SYSTEM SPECIFICATIONS

### PROCESSOR

Dual **Intel® Xeon®** processors (up to 22 cores each)

### MEMORY

Up to **1TB DDR4-2400MHz**

### GRAPHICS

Up to eight **NVIDIA® Quadro™**, **NVIDIA® Tesla™**, or **AMD® Radeon Pro™** professional graphics cards by utilizing PCIe Gen 3 Switch Risers

### INTEGRATED GRAPHICS

ASPEED AST2400 BMC

### HARD DRIVES

Up to 10 x 2.5" SSD/SATA drive bays

### PORTS

FRONT: 2 X USB 3.0

REAR: 2 x GbE LAN (Intel® I210-AT)  
1 x Management LAN

### MANAGEMENT AND MONITORING

IPMI 2.0-compliant ASMB8-iKVM module and ASWM Enterprise  
WfM 2.0, DMI 2.0, WOL by PME, PXE

### POWER SUPPLY

Up to 4 x 1620W Power Supplies

### EXPANSION OPTIONS

8-or-10 x PCIe x16 (Gen3 x16 bus) slots  
1 x PCIe x16 (Gen3 x8 bus) slots

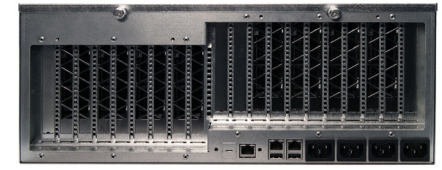
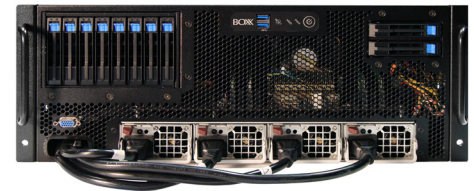
### OPERATING SYSTEM

Windows® 10 64-bit  
RedHat Enterprise Linux 6 and later  
CentOS 6 and later  
Ubuntu 12.04 and later

(Please call for additional OS support)



Intel® Xeon® processor  
Intel Inside®. Powerful Productivity Outside.  
© Intel, the Intel Logo, Intel Inside, Intel Core, and Core Inside are trademarks of Intel Corporation in the U.S. and/or other countries.



### SERVICE & SUPPORT

3-Year standard warranty  
One year of 24x7 phone support  
and next business day onsite service  
included (U.S. and Canada only)

**BOXX**  
**877-877-2699**

Outside U.S.: 512-835-0400