

APEXX W8R

The BOXX APEXX W8R Rackmount supports up to eight dual slot NVIDIA GPU cards and provides room for additional NVIDIA® Sync II cards, networking, storage adapters or NVMe storage devices while enabling increased bandwidth and lower latencies between PCIe Gen3 devices. APEXX W8R can drastically accelerate GPU rendering and look development enabling more refined visuals in less time.

RECOMMENDED FOR APPLICATIONS LIKE



KEY FEATURES

- Features a single Intel® Xeon® W class processor capable of driving up to 8 full-size professional grade NVIDIA® Quadro™, NVIDIA® Tesla™ or AMD® Radeon Pro™ graphics cards
- Up to 1TB of Memory
- Up to 10 removable SSD/SATA drives and up to 4 internal 2.5" or 2 internal 3.5" SSD/SATA drives

DIMENSIONS

4U Rackmount
19" W, 6.97" H, 30.18" D

SYSTEM SPECIFICATIONS

PROCESSOR

Intel® Xeon® W processor (up to 18 cores)

MEMORY

Up to 512GB DDR4-2666MHz

GRAPHICS

Up to eight NVIDIA® Quadro™, NVIDIA® Tesla™, or AMD® Radeon Pro™ professional graphics cards by utilizing PCIe Gen 3 Switch Risers

INTEGRATED GRAPHICS

ASPEED AST2500 BMC

HARD DRIVES

Up to 10 x 2.5" SSD/SATA drive bays

PORTS

FRONT: 2 X USB 3.0

REAR: 1 x 5GbE LAN
1 x Management LAN

MANAGEMENT AND MONITORING

IPMI 2.0

POWER SUPPLY

Up to 4 x 1620W Power Supplies

EXPANSION OPTIONS

8-or-10 x PCIe x16 (Gen3 x16 bus) slots
1 x PCIe x16 (Gen3 x8 bus) slots

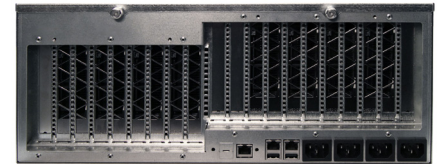
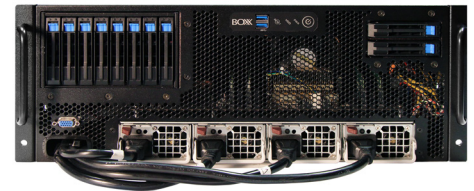
OPERATING SYSTEM

Windows® 10 64-bit
RedHat Enterprise Linux 6 and later
CentOS 6 and later
Ubuntu 12.04 and later

(Please call for additional OS support)



Intel® Xeon® processor
Intel Inside®. Powerful Productivity Outside.
© Intel, the Intel Logo, Intel Inside, Intel Core, and Core Inside are trademarks of Intel Corporation in the U.S. and/or other countries.



UP TO 4.0 GHz



UP TO 18 cores



UP TO 8 GPU



UP TO 512GB

SERVICE & SUPPORT

3-Year standard warranty
One year of 24x7 phone support
and next business day onsite service
included (U.S. and Canada only)

BOXX
www.boxx.com

BOXX
877-877-2699

Outside U.S.: 512-835-0400