

# serverBOXX S9100

The serverBOXX S9100 is a highly configurable media storage server solution that provides the ultimate in manageability, redundancy, and stability. It can be configured with a high bandwidth storage option and remote management software making it an ideal turn-key server solution for small to mid-size companies with limited or no IT staff with twelve 2U or sixteen 3U drive bays, a single Intel® Xeon® processor (up to 22 cores), and 512GB of system memory.

## KEY FEATURES

- Features **dual Intel® Xeon® processors** with up to 22 cores each (44 total) for professional rendering & simulation in applications like SOLIDWORKS® and Autodesk® Revit
- Up to 512GB of Memory
- Can be optionally preconfigured with PipelineFX Qube!™ and Autodesk® QM management software
- Redundancy provides failover to safeguard against workflow disruptions

## DIMENSIONS

2U/3U Rackmount Design  
17.2" (43.7cm) W,  
3.5" (8.9cm) H,  
25.5" (64.8cm) D

# BOXX

www.boxx.com

### RECOMMENDED FOR APPLICATIONS LIKE

**3** 3DS MAX

**I** INVENTOR

**R** REVIT

**A** AUTOCAD

**M** MAYA

**R** RECAP

  
Adobe® Creative Cloud®

**S** SOLIDWORKS

**ANSYS**

 SOLID EDGE

## SYSTEM SPECIFICATIONS

### PROCESSOR

Dual **Intel® Xeon®** processors (up to 22 cores each - 44 total)



Intel® Xeon® processor  
Intel Inside®. Powerful Productivity Outside.

© Intel, the Intel Logo, Intel Inside, Intel Core, and Core Inside are trademarks of Intel Corporation in the U.S. and/or other countries.

### MEMORY

Up to **512GB DDR4-2400MHz**

### GRAPHICS

Integrated ASPEED AST2400 BMC

### HARD DRIVES

2U - 12 x 3.5" Hot Swap Drive Bays  
3U - 16 x 3.5" Hot Swap Drive Bays  
Head Node: License manager, queue manager,  
up to 64TB of storage

### PORTS

2 x USB 2.0  
2 x 10GB Ethernet (Intel® i350 Dual Port Controller)  
1 x VGA (DB15)  
1 x COM (DB9)  
1 x RJ-45 IPMI

### REMOVABLE STORAGE

USB floppy drive  
20X Dual-layer DVD+/-R/W writer OR  
Blu-ray RW Drive

### POWER SUPPLY

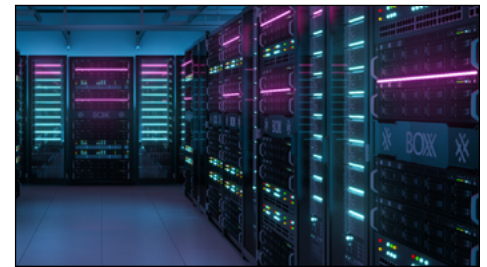
2U - [1+1 920 S9112 Watt Redundant Power Supply](#)  
3U - [1+1 1000 S9116 Watt Redundant Power Supply](#)

### EXPANSION OPTIONS

1 x PCI-e x16 Slot  
8 x PCI-e x8 Slots  
Installed with serverBOXX in ROW  
KVM Drawer

### OPERATING SYSTEM

Microsoft® Windows™ 10 64-bit  
Linux Operating System option available



UP TO **3.7 GHz**



UP TO **44 cores**



UP TO **1 GPU**



UP TO **512GB**



### SERVICE & SUPPORT

3-year standard warranty  
One year of 24x7 phone support  
and next business day onsite service  
included (U.S. and Canada only)

# BOXX

**877-877-2699**

Outside U.S.: 512-835-0400