



GoBOXX SLM 17

Weighing only 5 lbs. and just .69" thick, the ultra-thin GoBOXX SLM series is the perfect mobile workstation for a variety of professional applications. Featuring an Intel® Core™ i9 processor and professional NVIDIA® Quadro™ graphics on a gorgeous full HD display (1920x1080), GoBOXX SLM delivers quality performance for the architect, product designer, or content creator on the go.

KEY FEATURES

- Intel® Core™ i9 2.3 GHz powers a variety of professional applications while on the go.
- Powerful NVIDIA® Quadro™ graphics
- 17.3" Full-HD (1920x1080) Display
- Blue back-lit keyboard

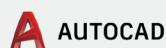
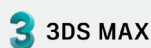
DIMENSIONS

15.63" (39.7cm) W,
.69" (2cm) H,
10.13" (25.7cm) D
5.01 lbs. w/ battery

BOXX

www.boxx.com

RECOMMENDED FOR APPLICATIONS LIKE



Adobe® Creative Cloud™



SYSTEM SPECIFICATIONS

PROCESSOR

Eight-core **Intel® Core™ i9-9880H processor** with Intel® HM370 Chipset

MEMORY

64GB DDR4-2666MHz

GRAPHICS

NVIDIA® Quadro™ RTX 3000 or RTX 4000 graphics

DISPLAY

17.3" Full-HD (1920x1080) LED

HARD DRIVE OPTIONS

512GB M.2 PCI-E SSD

COMMUNICATION

Integrated Intel® Dual Band Wireless-AC 9560
Wireless LAN
10/100/1000 Mbps Ethernet
Built-in 1.0M FHD Video Camera

PORTS

1 x USB 3.2 / Thunderbolt 3
3 x USB 3.2 Type-A
1 x USB 3.2 Type-C
1 x HDMI 2.0
Audio Out/In, Mic In

POWER SUPPLY

4-cell 82 Watt Hour lithium-ion battery w/
full-range 230W AC Adapter

EXPANSION & SECURITY

Built-In Memory Reader (Micro SD XC/HC)
External USB Floppy Drive (optional)
External DVD/RW USB Drive (optional)

OPERATING SYSTEM OPTIONS

Microsoft® Windows™ 10 64-bit Pro



Intel® Core™ i9 processor
Intel Inside®. Extraordinary Performance Outside.

© Intel, the Intel Logo, Intel Inside, Intel Core, and Core Inside are trademarks of Intel Corporation in the U.S. and/or other countries.



2.3 GHz



8 cores



1 GPU



64GB



SERVICE & SUPPORT

1-year standard warranty
Expert support via phone and e-mail
M-F, 7AM-6PM CST

BOXX

877-877-2699

Outside U.S.: 512-835-0400