



FLEXX A1G

Purpose-built to optimize demanding 3D content creation, CAD, or motion media, the FLEXX A1G node delivers the power and performance of an APEXX A-Class desk-side workstation in a high-density form factor. As part of the FLEXX data center platform, the liquid cooled FLEXX A1G features remote management, 10Gb Ethernet, and professional graphics, empowering work from anywhere, system administrator agility, and state-of-the-art, onsite or remote, professional application performance.



Key Features:

Remote system management via IPMI and 10Gb Ethernet make the FLEXX A1G an ideal workstation to implement Remote Workstation capabilities.

Features an AMD 16-core Ryzen™ 3000/5000 with advanced liquid cooling for engineering and product design applications like SOLIDWORKS® and Autodesk® Revit as well as excellent multithreaded for simulation or rendering applications for Manufacturing & Product Design; Architecture, Engineering & Construction or Media & Entertainment

Professional grade NVIDIA® Quadro™, NVIDIA® GeForce™, or AMD® Radeon Pro™ Graphics

World class single and multi-threaded performance for digital content creation & other professional applications

Service & Support

Three-year standard warranty. One year of 24/7 phone support with next business day onsite service at no additional cost (US and Canada only).

SYSTEM SPECIFICATIONS

Processor

AMD Ryzen 3000/5000 processor with liquid cooling

Memory

Up to 128GB DDR4-3200

Graphics

1 x * NVIDIA® Quadro™ and or AMD® Radeon Pro™ professional graphics cards

Hard Drives

1 x M.2 NVMe SSD (Up to 2TB)

Ports

2 x 10 Gigabit Ethernet (RJ-45)
1 x IPMI (RJ-45)
2 x USB 3.2 Gen1 (Type-A)
1 x VGA to BMC

System Management

Intelligent Platform Management Interface (IPMI) Version 2.0 with KVM Over IP

Operating System

Microsoft® Windows™ 10 64-bit
Linux OS available (please contact sales)

Dimensions

35.45" L X 1.72" W X 8.49" H

FLEXX SHELF Dimensions

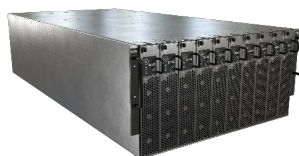
35.5" L X 17.68" W X 8.67" H

Rev. A1G.01

BOXX

BOXX.com | 877-877-2699

Outside US: 512-835-0400



Front



Front



Back