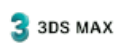




## APEXX X4

The APEXX X4 is a cost effective professional workstation for workflows that require maximum CPU cores at a high frequency. Whether you're editing feature films or deploying cutting edge VR experiences, the APEXX X4, with support for up to four graphics cards and 256GB of memory, is an ideal platform for extreme multi-tasking in your complex production pipeline.



### Key Features

- Intel® Core™ X-series processor (up to 18 cores)
- Up to 256GB of Memory
- Up to three\* GPUs
- Ideal for local GPU accelerated compute workflows or multi-display applications

### Materials

Professional grade aluminum chassis manufactured in the U.S.

### Service & Support

Three-year standard warranty. One year of 24/7 phone support with next business day onsite repair at no additional cost (US and Canada only).

**Chipset:** Intel X299

**Socket:** Single (2066)

**CPU Cooling:** Liquid-Cooled (closed loop)

**Processor:** Intel Core X-Series 10th Gen

**Cores Frequency (GHz):** 3.0 Base clock / 4.8 Boost clock\*

**Cores/Threads:** 18/36

**Multi-Threading:** Yes

**Max Configurable Memory:** 256GB

**DIMM Slots:** 8

**Physical PCIe Slots:**

x16, x16(x8), x16, x16(x8), x16, x16(x8), x16

**PCIe Lanes per GPU:**

Up to 4 GPUs at x16

**M.2 Drives:** 3 up to 2TB each

**U.2 Support:** No

**RAID Support:** 0,1,5,10

**OCuLink Support:** No

**Max 2.5" / 3.5" Configurations:** 4 x 3.5" + 2 x 2.5" | or | 10 x 2.5"

**Onboard Wi-Fi:** 802.11ax (Wi-Fi 6)

**Onboard Bluetooth:** v5.0

**Power Supply:** 1,600-watt (80 PLUS Gold)

**GPU Power Budget (W):** 1000

**Chassis Dimensions:**

6.85" (17.40cm) W

18.0" (45.72cm) H

20.2" (51.31cm) D

**Front I/O:**

2 x USB 3.2 Gen 1

Audio Out/Mic In

**Rear I/O:**

2 x 10GbE LAN (RJ-45)

1 x Optical S/PDIF out

1 x USB 3.2 Gen 2 (Type-C)

8-Channel Audio

4 x USB 3.2 Gen 1

1 x USB 3.2 Gen 2

**Optical Drive:** DVD±RW or Blu-Ray RW (5.25")

**Rackmount Option:** Yes

**Notes:**

\*Overclocked version of this model may be available.

Highest available CPU core count and associated clock speeds shown. Other processors with different core counts and frequencies may be available.

GPU power budgets are conservative estimates.

Shipping weights vary by configuration.

X4.03 5/18/2021 8:18:56 PM

# BOXX

BOXX.com | 877-877-2699  
Outside US: 512-835-0400

